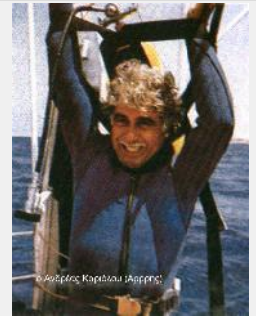


1965

μ

1967



μ 14,75m

4,30m

μ

,18  
10.000 μ

μμ

14,760

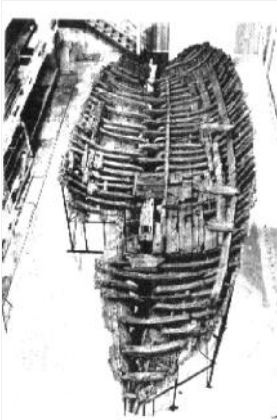
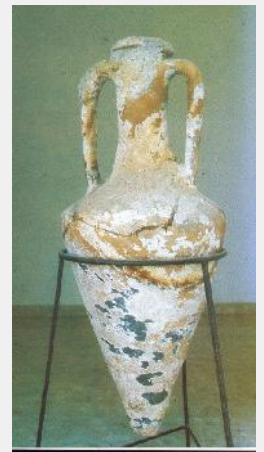
:1 μμ  
μ

,4' ,  
4 )  
μ .  
404 μ  
μ 29 μ  
, μ  
, μ μ .

,4

(4 μ  
μ -  
μ

μ μ ( μ )  
μ μ -  
, μ -



μ

μ

μ

